

# PERGOLAS

Pergolas aren't just for those seeking shade; they are also for those desiring character and style. Whether your patio demands the elegance of a bold stately structure, your garden needs a charming centerpiece, or you're simply looking to define a space to enjoy the ambiance of a cool evening, a pergola is the answer you have been searching for. With its many styles, the pergola offers a solution for any outdoor space.

## **(2) 18'X22' KINGSTONS**

Standard Unit with Canyon Brown Stain







12'X14' VINYL HOLLANDER  
Standard Unit with Optional Black Brackets



**NEW  
THIS  
YEAR!**



**VINYL**

# HOLLANDER PERGOLAS

Our standard Vinyl Hollander Pergolas are structurally constructed of Pressure-Treated Southern Yellow Pine and sleeved in PVC Vinyl. The 6×6 posts are Pine at its core, and wrapped in maintenance-free vinyl. We include decorative post skirts at the bottom to hide the anchoring brackets and bolts that attach directly to your concrete footers. Double 2×8 headers span from post to post. On top of the headers you will find 2×6 rafters & 1×3 stringers.

With clean cut corners and custom laser cut steel brackets, this structure serves as a stunning addition to any backyard.

## **Pergola Design Options Pg. 58-59**

*Sizes, Posts, Colors, EZ Shades, Additional & Decorative Options*

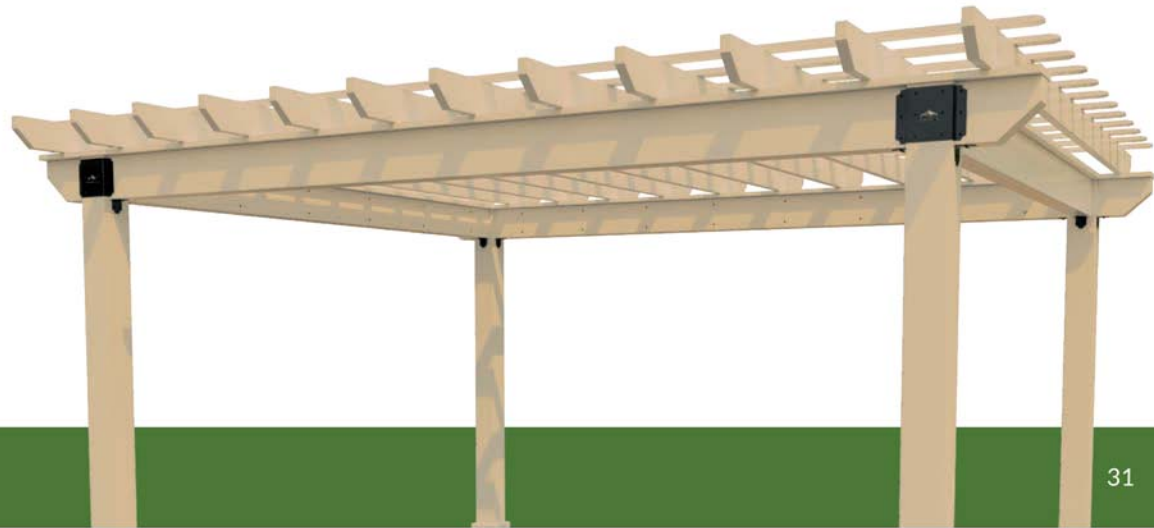


### **12'X16' VINYL HOLLANDER**

*Almond Vinyl*

**LEFT** (1# Southern Pine Packed Vinyl) The support structure is built using pressure-treated pine and wrapped in vinyl sleeves for a clean maintenance-free appearance.

**RIGHT** (Custom Steel Brackets) Several powder coated custom steel brackets are used on these structures. Black brackets are standard on almond, clay and wood Hollander Pergolas while white brackets are standard on white vinyl Hollander Pergolas.





12'X14' WOOD HOLLANDER  
Golden Oak Stain



**NEW  
THIS  
YEAR!**



**WOOD**

# HOLLANDER PERGOLAS

Our Wood Hollander Pergolas are built using #1 and premium grade, pressure treated Southern Yellow Pine. These structures come with standard 5x5 posts. We include decorative post skirts at the bottom to hide the anchoring brackets and bolts that attach directly to your concrete footers. Double 2x8 headers span from post to post. On top of the headers you will find 2x6 rafters & 2x4 stringers.

This structure is a modern approach to a traditional design. Similar in size and shape to our Traditional Pergolas, the Hollander offers a cleaner look perfect for every backyard.

## **Pergola Design Options Pg. 58-59**

*Sizes, Posts, Colors, EZ Shades, Additional & Decorative Options*



**12'X16' WOOD HOLLANDER**  
Sky Gray Stain



**LEFT** (Custom Anchor Brackets)  
4 Stainless steel brackets keep this pergola standing strong even in high winds.

**RIGHT** (Rafters & Purlins) Our low-profile rafters and purlins give a sleek modern look without being overly decorative.



10'X14' VINYL ARTISAN  
10" Tapered Columns, EZ Shade Canopy, & (2) EZ Shade Curtains





VINYL

# ARTISAN PERGOLAS

Our Vinyl Artisan Pergola comes standard with maintenance-free white vinyl, solid pressure-treated wood 6x6 posts sleeved in vinyl with decorative base and capital. Double 2x8 headers with pressure-treated wood, sleeved in white vinyl provide strength and a non-sagging appearance. Full width 2x6 rafter joists with wood inside, span across the shorter side, and full width 2x4 purlins span the longer side. We include engineered anchor brackets for anchoring to concrete pads and wood decks. With a vinyl pergola you don't have to deal with the hassles of maintenance. Your pergola is designed for easy, worry-free care with your family's safety and enjoyment in mind.

## Pergola Design Options Pg. 58-59

*Sizes, Posts, Colors, EZ Shades, Additional & Decorative Options*



**10'X14' VINYL ARTISAN**  
8"x8" Square Posts



**10'X16' VINYL ARTISAN**  
Standard Posts & EZ Shade Canopy



**14'X20' VINYL ARTISAN**  
10" Tapered Columns



**16'X32' VINYL ARTISAN**  
10" Tapered Columns, EZ Shade Canopy, & EZ Shade Curtain

**LEFT** (Decorative End Caps) The joists and purlins of your pergola are capped with these decorative end caps.

**MIDDLE** (Post Skirts) The anchor brackets and bolts are hidden beneath these attractive post skirts.

**RIGHT** (Post Trim) The top of each post is covered with this post trim to hide the connecting screws.





10'X14' WOOD ARTISAN  
8"x8" Posts & Mahogany Stain





WOOD

# ARTISAN PERGOLAS

Our Artisan Pergola comes standard with a Rough Sawn Western Red Cedar top and is pre-stained to your choice of one of our available standard stain colors. Pressure-treated wood 6x6 posts sleeved in white vinyl with decorative base and capital. Double ply 2x8 (rough cut) headers on all four sides create a completely finished look. 2x6 joists (rough cut) span the shorter side and 2x4 purlins (rough cut) span the longer side, notched together for strength and to resist warping. We include anchor brackets for anchoring to concrete pads and wood decks.

## Pergola Design Options Pg. 58-59

*Sizes, Posts, Colors, EZ Shades, Additional & Decorative Options*

**LEFT** (Notched Intersections) The joists and purlins of your pergola are notched together for strength and to resist warping.

**MIDDLE** (Anchor Brackets) Your pergola includes powder-coated anchor brackets and concrete lag bolts.

**RIGHT** (Double-Ply Headers and Decorative Trim) Your Pergola comes with heavy duty double-ply headers to resist sagging, and we cover the connections with trim for a finished and refined look.



**10'X10' WOOD ARTISAN**  
EZ Shade Canopy & Mahogany Stain



**10'X14' WOOD ARTISAN**  
10" Tapered Columns & Canyon Brown Stain



**16'X32' WOOD ARTISAN**  
10" Tapered Columns & Mahogany Stain



**10'X32' WOOD ARTISAN**  
8"x8" Wood Posts & Custom Stain Color



10'X12' ARCADIAN  
Standard Unit





VINYL

# ARCADIAN PERGOLAS

Our Vinyl Arcadian Pergola comes standard with maintenance-free white vinyl. Solid pressure-treated wood 6x6 posts are sleeved in vinyl with a decorative base and capital. Double 2x8 headers with pressure-treated wood, sleeved in white vinyl provide strength and a non-sagging appearance. Full width 2x6 arched rafter joists span across the shorter side, and 2x2 purlins span the longer side. We include engineered anchor brackets for anchoring to concrete pads and wood decks. With a vinyl pergola, you don't have to deal with the hassles of maintenance. Your pergola is designed for easy, worry-free care with your family's safety and enjoyment in mind.

## Pergola Design Options Pg. 58-59

*Sizes, Posts, Colors, EZ Shades, Additional & Decorative Options*



**10'X12' ARCADIAN**  
Standard Unit with Almond Vinyl



**10'X14' ARCADIAN**  
10" Tapered Columns



**14'X18' ARCADIAN**  
Standard Unit installed on Footers



**14'X20' ARCADIAN**  
10" Tapered Columns & Custom Length Purlins Cut on Site to Match Curve of Patio

**LEFT** (Arched Joists) Stand out from the crowd with these continuous arched joists which give your pergola a unique look.

**MIDDLE** (6 x 6 Posts) The large 6"x6" posts offer a strong and sturdy base for this unique pergola.

**RIGHT** (Post Trim) The top of each post is covered with this post trim to hide the connecting screws.



12'X17' HEARTHSIDE  
Lattice Roof & Cinder Stone





## WOOD

# HEARTH-SIDE PERGOLAS

The Hearthside Pergola comes standard with unstained pressure-treated Southern Yellow Pine (stain colors available), solid laminated 5x5 posts with decorative post skirts, and 2x6 arched rafter joists utilizing engineered connection brackets for strength. The arched rafters span across the even measurement side, and 2x6 purlins with scalloped ends span the odd side. Both have notched intersections to resist warping. The triple ply 2x8 header provides strength to maintain a straight non-sagging appearance. We include anchor brackets for concrete pads and wood decks.

### Pergola Design Options Pg. 58-59

*Sizes, Posts, Colors, EZ Shades, Additional & Decorative Options*



**12'X15' HEARTH-SIDE**

Lattice Roof, Privacy Wall, EZ Shade Canopy, & Golden Oak Stain



**12'X17' HEARTH-SIDE**

With Lattice Roof, Superior Posts & Canyon Brown Stain



**12'X17' HEARTH-SIDE**

Superior Posts & Sepia Brown Stain

**12'X15' HEARTH-SIDE**

Standard Unit Unstained



**LEFT** (Triple-Ply Headers) These heavy-duty headers carry the load of the large arched rafters.

**MIDDLE** (Joist Brackets) These powder-coated brackets connect the two-part arched joists together for a strong connection.

**RIGHT** (Notched Intersections) The joists and purlins of your pergola are notched together for strength and to resist warping.



16'X22' KINGSTON  
Cedar Stain





WOOD

# KINGSTON PERGOLAS

Our standard Kingston pergolas are completely made of a Rough Sawn Western Red Cedar lumber. It stands on solid 8x8 cedar posts and includes large 4x10 braces for stability. The heavy-duty headers are built with 6x12 beams and carry the 4x8 joists spaced 24" on center. Blocking out an abundant amount of sun, the 2x3 purlins are spaced approximately 6" on center providing the perfect amount of shade to sit and enjoy a mid-summer day. Available sizes range from 10'x10' up to 18'x40'. This pergola is available up to a massive 18'x22' with only four posts.

## Pergola Design Options Pg. 58-59

*Sizes, Posts, Colors, EZ Shades, Additional & Decorative Options*



**12'X16' KINGSTON**  
EZ Shade Canopy & Canyon Brown Stain



**14'X16' KINGSTON**  
EZ Shade Curtain & Cinder Stain



**16'X18' KINGSTON**  
Canyon Brown Stain



**18'X22' KINGSTON**  
Mahogany Stain

**LEFT** (18' Long Units & Shorter)  
Lag bolts only

**MIDDLE** (20' Long Units & Longer)  
Includes joining plates.

**RIGHT** (Heavy-Duty Appearance) Large  
4x8 joists offer a beefy feel with the 2x3  
purlins giving ample shade and comfort.





10'X14' VINYL SANTA FE  
Standard Unit with Canyon Brown Stain





VINYL

# SANTA FE PERGOLAS

Our Vinyl Santa Fe Pergolas come standard with 8x8 posts and decorative vinyl post skirts. Large curved braces keep your unit solid and sturdy. This pergola showcases heavy-duty headers on all four sides to support the roof.

Available in vinyl with a stained wooden top, you can order your Santa Fe Pergola to fit perfectly into your backyard setting. The roofs on all models are constructed of pine 2x8 joists and pine 2x3 purlins and have a 2/12 roof pitch. Need more shade? Add an EZ Shade Curtain or Canopy to maximize your outdoor living space.

## Pergola Design Options Pg. 58-59

*Sizes, Posts, Colors, EZ Shades, Additional & Decorative Options*

### 12'X12' VINYL SANTA FE Almond Vinyl & Mahogany Stain



**LEFT** (Joists and Purlins) 2x8 pine joists with 2x3 pine purlins give ample shade and comfort.

**MIDDLE** (Post Skirts) The anchor brackets and bolts are hidden beneath these attractive post skirts.

**RIGHT** (Post Trim) The top of each post is covered with this post trim to hide the connecting screws.



10'X14' CEDAR SANTA FE  
Standard Unit with Canyon Brown Stain, EZ Shade Canopy & (2) EZ Shade Curtains





## WOOD

# SANTA FE PERGOLAS

Our Wood Santa Fe Pergolas come standard with 8x8 posts and decorative post skirts. Large curved braces keep your unit solid and sturdy. This pergola showcases heavy-duty headers on all four sides to support the roof.

Available in pine or cedar you can order your Santa Fe Pergola to fit perfectly into your backyard setting. The roofs on all models are constructed of 2x8 joists and 2x3 purlins and have a 2/12 roof pitch. Need more shade? Add an EZ Shade Curtain or Canopy to maximize your outdoor living space.



**10'X14' PINE SANTA FE**  
Standard Unit with Cedar Stain



**10'X16' CEDAR SANTA FE**  
Standard Unit with Mushroom Stain

### Pergola Design Options Pg. 58-59

*Sizes, Posts, Colors, EZ Shades, Additional & Decorative Options*

**12'X12' PINE SANTA FE**  
Standard Unit Unstained



**LEFT** (Joists and Purlins) 2x8 pine joists with 2x3 pine purlins give ample shade and comfort.

**MIDDLE** (Post Skirts) The anchor brackets and bolts are hidden beneath these attractive post skirts.

**RIGHT** (Post Trim) The top of each post is covered with this post trim to hide the connecting screws.



12'X12' TRADITIONAL  
Standard Unit





VINYL

# TRADITIONAL PERGOLAS

Our Traditional Vinyl Pergolas are built standard with maintenance-free white vinyl over pressure-treated wood for superior strength and long life. We also use 5x5 wood posts sleeved with white vinyl, decorative post skirts, 1½x5½ joists with decorative scalloped end caps that span the short side, and 1½" square purlins with decorative diamond end caps that span the longer side. Heavy-duty double 2x6 headers with braces provide rigidity, along with anchor brackets for concrete pads and wood decks. With a vinyl pergola, you don't have to deal with the hassles of maintenance. Your pergola is designed for easy, worry-free care with your family's safety and enjoyment in mind.

## Pergola Design Options Pg. 58-59

*Sizes, Posts, Colors, EZ Shades, Additional & Decorative Options*



**10'X12' VINYL TRADITIONAL**  
Lattice Roof, Superior Posts, & Customer Installed Side Shade



**14'X14' VINYL TRADITIONAL**  
Superior Posts



**14'X20' VINYL TRADITIONAL**  
EZ Shade Canopy



**16'X23' VINYL TRADITIONAL**  
(2) Extra Posts & Lattice Roof

**LEFT** (Decorative End Caps) The joists and purlins are capped with these decorative end caps.

**MIDDLE** (Post Skirts) The anchor brackets and bolts are hidden beneath these attractive post skirts.

**RIGHT** (Braces) The braces make this pergola a strong and sturdy structure.



12'X12' TRADITIONAL  
Mahogany Stain & Lattice Roof





WOOD

# TRADITIONAL PERGOLAS

Our standard Traditional Wood Pergolas include unstained pressure-treated Southern Yellow Pine, solid laminated 5x5 posts with decorative post skirts, solid 2x6 joists span the shorter side & 2x4 purlins span the longer side, both with scalloped ends and notched intersections to resist warping. We add heavy-duty double 2x6 headers with braces for rigidity, and anchor brackets for concrete pads and wood decks.

## Pergola Design Options Pg. 58-59

*Sizes, Posts, Colors, EZ Shades, Additional & Decorative Options*



**8'X10' WOOD TRADITIONAL**  
EZ Shade Canopy & Cinder Stain



**10'X10' WOOD TRADITIONAL**  
Superior Posts & Cedar Stain



**10'X14' WOOD TRADITIONAL**  
Standard Unit with Canyon Brown Stain



**16'X32' WOOD TRADITIONAL**  
(2) EZ Shade Canopies, Superior Posts, & Canyon Brown Stain

**LEFT** (Braces) The braces make this pergola a strong and sturdy structure.

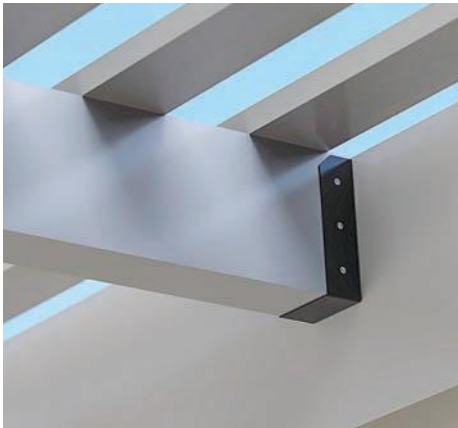
**MIDDLE** (Anchor Brackets) These powder-coated anchor brackets attach the pergola to your footers.

**RIGHT** (Decorative Scallops) The joists and purlins are cut with these decorative ends for a finished and refined appearance.





14'X14' VINYL VISTA  
Standard Unit





VINYL

# VISTA PERGOLAS

Our Vinyl Vista Pergolas come standard with 8x8 posts and decorative post skirts. The support structure is constructed of pressure-treated pine and wrapped in cellular PVC and vinyl sleeves for a clean modern look. At the top of the posts you will find large powder-coated brackets to enhance lateral strength and rigidity. The large headers offer wide spans for an unobstructed view. The joists are hung from the headers with powder-coated brackets for a low-profile look while maintaining the traditional pergola look and feel. Finishing off the top are the 1x3 purlins, spaced to maximize shade while also allowing the sky to show through. This modern looking pergola will fit perfectly into your modern backyard oasis.

## Pergola Design Options Pg. 58-59

*Sizes, Colors, EZ Shades, Additional & Decorative Options*

**10'X10' VINYL VISTA**  
Almond Vinyl



**LEFT** (Joist Brackets) These brackets attach the joists directly to the headers for a low-profile appearance.

**MIDDLE** (Post Skirt) The anchor brackets and bolts are hidden beneath these attractive skirts.

**RIGHT** (Post & Header Bracket) These large brackets make this unit a strong and sturdy structure.



10'X10' CEDAR VISTA  
6" higher posts, EZ Shade Canopy, & Canyon Brown Stain





WOOD

# VISTA PERGOLAS

Our Wood Vista Pergolas are available in either Western Red Cedar or Southern Yellow Pine. These pergolas come standard with 8x8 posts and decorative post skirts. At the top of the post you will find large powder-coated brackets to enhance lateral strength and rigidity. The large headers offer wide spans for an unobstructed view. The joists are hung from the headers with powder-coated brackets for a low-profile look while maintaining the traditional pergola look and feel. Finishing off the top are the 1x3 purlins, spaced to maximize shade while also allowing the sky to show through. This modern looking pergola will fit perfectly into your modern backyard oasis.

## Pergola Design Options Pg. 58-59

*Sizes, Colors, EZ Shades, Additional & Decorative Options*

**14'X14' PINE VISTA**  
Standard Unit with Mushroom Stain



**LEFT** (Oversized Headers) These large headers eliminate the need for corner braces.

**MIDDLE** (Electric Package) Add an electrical package and enjoy your pergola well into the evening hours.

**RIGHT** (Post & Header Bracket) These large brackets make this unit a strong and sturdy structure.



**CUSTOM WOOD TRADITIONAL**  
Attached to House, (5) 6" Higher Posts, (2) EZ Shade Curtains, & Golden Oak Stain





VINYL & WOOD

# CUSTOM PERGOLAS

## YOUR STYLE

Looking for a pergola that matches your unique style? We can custom design most of our structures to fit your needs and the style of your home.

## YOUR DESIGN

Don't see what you are looking for? We will work with you to create a design that is uniquely yours.

## YOUR SIZE

Do you have a uniquely sized space you want to fit? We can custom design a pergola to fit your dimensions perfectly!

### Pergola Design Options Pg. 58-59

*Sizes, Posts, Colors, EZ Shades, Additional & Decorative Options*

**LEFT** (Custom Design) Don't see what you like in our brochure? Request a custom design!

**MIDDLE** (Attached to House) We can make most of our pergolas to attach to your home.

**RIGHT** (Custom Shapes) Do you have a difficult patio or angle? We can help with custom shaped pergolas.



**CUSTOM CEDAR ARTISAN**  
Custom Columns & Mushroom Stain



**CUSTOM CEDAR ARTISAN**  
Attached to House, Custom 10" Tapered Columns, Lattice Roof, & Mushroom Stain



**CUSTOM WOOD TRIANGLE TRADITIONAL**  
Privacy Wall & Canyon Brown Stain



**CUSTOM VINYL TRADITIONAL**  
Privacy Walls & Glu-Lam Beam Designed to Span a 19' Opening



# DESIGN YOUR PERGOLA

## SIZES/ DIMENSIONS

<b>Hollander</b>	8'x8', 8'x10', 8'x12', 8'x14', 8'x16', 10'x10', 10'x12', 10'x14', 10'x16', 10'x20', 12'x12', 12'x14', 12'x16', 12'x20', 12'x24', 14'x14', 14'x16', 14'x20', 14'x24', 14'x28', 16'x16', 16'x20', 16'x24', 16'x28', 16'x32'
<b>Artisan</b>	8'x8', 8'x10', 8'x12', 8'x14', 8'x16', 10'x10', 10'x12', 10'x14', 10'x16', 10'x20', 12'x12', 12'x14', 12'x16', 12'x20', 12'x24', 14'x14', 14'x16', 14'x20', 14'x24', 14'x28', 16'x16', 16'x20', 16'x24', 16'x28', 16'x32'
<b>Arcadian</b>	8'x8', 8'x10', 8'x12', 8'x14', 8'x16', 10'x10', 10'x12', 10'x14', 10'x16', 10'x20', 12'x12', 12'x14', 12'x16', 12'x20', 12'x24', 14'x14', 14'x16', 14'x20', 14'x24', 14'x28'
<b>Hearthside</b>	8'x11', 8'x13', 8'x15', 8'x17', 8'x21', 8'x25', 8'x29', 10'x11', 10'x13', 10'x15', 10'x17', 10'x21', 10'x25', 10'x29', 12'x11', 12'x13', 12'x15', 12'x17', 12'x21', 12'x25', 12'x29', 14'x11', 14'x13', 14'x15', 14'x17', 14'x21', 14'x25', 14'x29'
<b>Kingston</b>	10'x10', 10'x12', 10'x14', 10'x16', 10'x18', 10'x20', 10'x22', 12'x12', 12'x14', 12'x16', 12'x18', 12'x20', 12'x22', 12'x24', 14'x14', 14'x16', 14'x18', 14'x20', 14'x22', 14'x24', 14'x28', 16'x16', 16'x18', 16'x20', 16'x22', 16'x24', 16'x28', 16'x32', 18'x18', 18'x20', 18'x22', 18'x24', 18'x28', 18'x32', 18'x36', 18'x40'
<b>Santa Fe</b>	10'x10', 10'x12', 10'x14', 10'x16', 10'x18', 10'x20', 12'x10', 12'x12', 12'x14', 12'x16', 12'x18', 12'x20', 12'x24', 14'x10', 14'x12', 14'x14', 14'x16', 14'x18', 14'x20', 14'x24', 14'x28', 16'x10', 16'x12', 16'x14', 16'x16', 16'x18', 16'x20', 16'x24', 16'x28', 16'x32', 18'x10', 18'x12', 18'x14', 18'x16', 18'x18', 18'x20', 18'x24', 18'x28', 18'x32', 18'x36'
<b>Traditional</b>	8'x8', 8'x10', 8'x12', 8'x14', 8'x16', 10'x10', 10'x12', 10'x14', 10'x16', 10'x20', 12'x12', 12'x14', 12'x16', 12'x20', 12'x24', 14'x14', 14'x16', 14'x20', 14'x24', 14'x28', 16'x16', 16'x20', 16'x24', 16'x28', 16'x32'
<b>Vista</b>	10'x10', 10'x12', 10'x14', 10'x16', 10'x18', 10'x20', 12'x12', 12'x14', 12'x16', 12'x18', 12'x20', 12'x24', 14'x14', 14'x16', 14'x18', 14'x20', 14'x24', 14'x28', 16'x16', 16'x18', 16'x20', 16'x24', 16'x28', 16'x32', 18'x18', 18'x20', 18'x24', 18'x28', 18'x32', 18'x36', 20'x20', 20'x24', 20'x28', 20'x32', 20'x36', 20'x40'

## ADDITIONAL PERGOLA OPTIONS

### Attached to House

Order your structure with a header to attach to your home.

Proper attachment is required to protect your home.

### 6" to 48" Higher Posts

Creates a higher roof line.

### Additional Purlins

Add additional purlins to your pergola for more shade or a more detailed appearance.

### EZ Shade

Add a curtain or canopy to your pergola for extra shade.

**SEE PAGE 92**

### IMPORTANT NOTICE:

Colors printed in this brochure may not be accurate and should be used as reference only. If color selection is critical, please refer to actual color swatches available at your dealer location.

## WOOD STAIN (Includes Water Repellent)



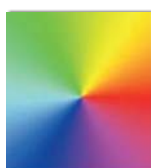
Golden Oak Cedar Sepia Brown Canyon Brown Mushroom Sky Gray Cinder Mahogany

## VINYL & PAINT COLORS



White Almond Clay

## CUSTOM COLORS



Custom colors are available for wood only. Customer provides paint or stain, or supplies a color code. Custom colors will add additional lead time.

## WOOD POSTS



5x5 Superior Post

(Not available with 10" columns.)



8x8 Wood Post

## VINYL POSTS



5x5 Superior Post

(Not available with 10" columns.)

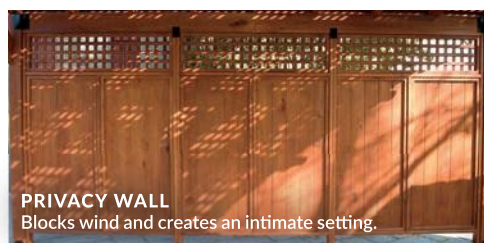


8x8 Vinyl Post



10" Tapered Columns

## DECORATIVE OPTIONS (Only available for Traditional and Hearthside Pergolas)



**PRIVACY WALL**  
Blocks wind and creates an intimate setting.



**LATTICE ROOF**  
Provides increased shade.



# EZ SHADES

Looking for extra sun coverage? We got you covered. Add an EZ Shade product to your outdoor structure and maximize your shaded space. Our manual, one-handed curtains and canopies can offer full coverage on a mid-sunny day. These curtains and canopies are made of durable, easy to clean fabric that's mildew and stain-resistant.

**EZ SHADE CANOPY**  
Westfield Mushroom





EZ SHADE CANOPY  
Burgundy, Black, & White





EZ SHADE

# CANOPY SYSTEM

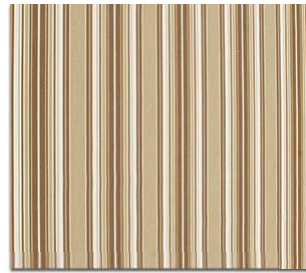
Consider adding this EZ Shade Canopy System to your new or existing pergola. This manually controlled canopy glides effortlessly across the triple track system to shade the entire area. You will find yourself using your patio more often when you can block out that hot mid-day sun, or mild rain. Bring this EZ Shade Canopy System to your backyard oasis.

Choose from one of our available stock colors shown to the right. Other Sunbrella fabrics are available for an additional fee.

**LEFT** (Manual Operation) Our EZ Shade Canopy glides smoothly for easy operation.

**MIDDLE** (Quality Materials) Made from stainless steel fasteners, powder-coated brackets, and Sunbrella fabric.

**RIGHT** (Full Coverage) Get out of the mid-day sun and enjoy your backyard patio.



WESTFIELD MUSHROOM



EAST RIDGE COCOA



DUBONNETT TWEED



GREY, BLACK & WHITE



CHARCOAL TWEED



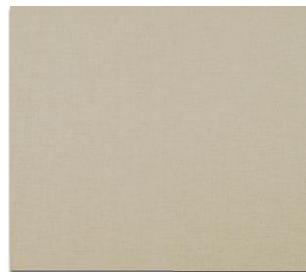
BLACK FOREST FANCY



HEMLOCK TWEED



NAVY TAUPE FANCY



LINEN TWEED



HEATHER BEIGE CLASSIC



ROYAL BLUE TWEED



BURGUNDY, BLACK & WHITE



EZ SHADE CURTAIN  
Stucco





## EZ SHADE

# CURTAIN SYSTEM

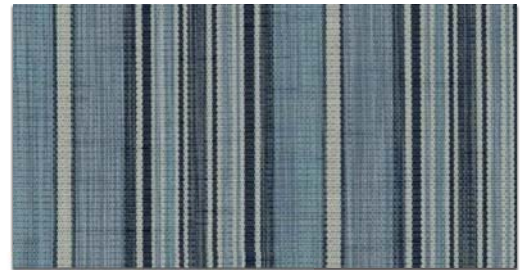
Consider adding this EZ Shade Curtain System to your new or existing pergola or pavilion. This manually-controlled curtain winds down effortlessly and glides down the double cable system to shade the entire area. When not in use the fabric stores inside a custom stained or vinyl box. You will find yourself using your patio more often when you can block out that glaring afternoon sun. The fabric is a dense screen material that has partial transparency. Bring this EZ Shade Curtain System to your backyard oasis.

Choose from one of our available stock colors show to the right. Other Phifertex curtain fabrics are available for an additional fee.

**LEFT** (Full Coverage) Get out of the mid-day sun and enjoy your backyard patio.

**MIDDLE** (Manual Operation) Our EZ Shade Curtain is guided by stainless steel cables and lowered using an included hand crank.

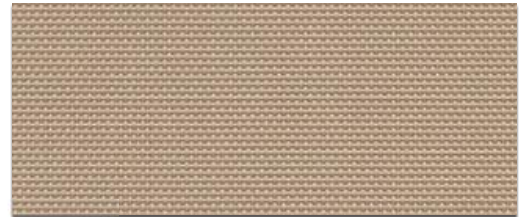
**RIGHT** (Quality Materials) Made from stainless steel fasteners, powder-coated brackets, and Phifertex fabric.



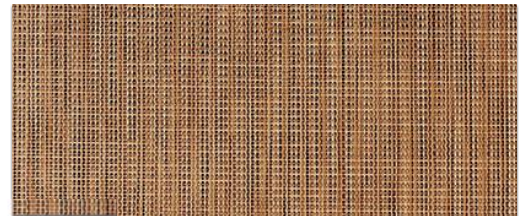
DAKOTA STRIPE BLUEPRINT



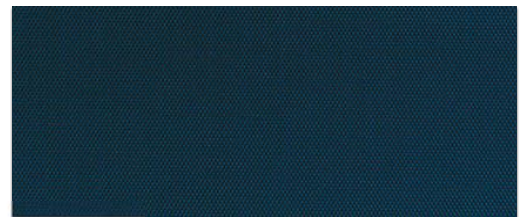
DAKOTA STRIPE CLAY



STUCCO



BURLAP



NAVY PIER



METALLICA SMOKE



BLACK